

Modular Table Guide

Durable, Convenient, and Cost-Effective

These mix and match table assemblies brings flexible arrangement options to your establishment. From long 6 person tables, to small 2 person cafe tables, we have you covered for any seating arrangement imaginable. Modular parts mean that only necessary replacements need to be made, saving you money.

- Modular assembly
- Economical upkeep
- Flexible arrangements
- Premium appearance and quality
- Double-sided tabletops



Telephone: 1-800-465-0234

Fax: (905) 607-0234

Email: sales@omcan.com

Website: www.omcan.com



Authorized Dealer



Made in China

Part 1: Two-Sided Table Tops!

With our modular tables, simple replace the tabletop when it is worn or damaged, without having to change the entire table!

Please note that while the table tops are double sided, installing the surface onto a column will result in screw holes that prevent the under side from being used as the top side in the future.

Doublesided Tabletop- Round

Item #	Diameter	Thick	Color	Diners
43168	36"	1"	Oak / Walnut	4
43178	36"	1"	Mahogany / Black	4
43167	30"	1"	Oak / Walnut	2-3
43177	30"	1"	Mahogany / Black	2-3
43166	24"	1"	Oak / Walnut	2
43176	24"	1"	Mahogany / Black	2

Doublesided Tabletop- Square

Item #	Size	Thick	Color	Diners
43165	36"	1"	Oak / Walnut	4
43175	36"	1"	Mahogany / Black	4
43162	30"	1"	Oak / Walnut	2
43172	30"	1"	Mahogany / Black	2
43159	24"	1"	Oak / Walnut	2
43169	24"	1"	Mahogany / Black	2

Doublesided Tabletop- Rectangular

Item #	Size	Thick	Color	Diners
44523	30" x 60"	1"	Oak / Walnut	6
44524	30" x 60"	1"	Mahogany / Black	6
43164	30" x 48"	1"	Oak / Walnut	4-6
43174	30" x 48"	1"	Mahogany / Black	4-6
43163	30" x 42"	1"	Oak / Walnut	4
43173	30" x 42"	1"	Mahogany / Black	4
43161	24" x 42"	1"	Oak / Walnut	4
43171	24" x 42"	1"	Mahogany / Black	4
43160	24" x 30"	1"	Oak / Walnut	2
43170	24" x 30"	1"	Mahogany / Black	2



Part 2: Table Support Column

Note: Some rectangular tables will require 2 columns + 2 bases for support.
Details listed on configuration guide

Table Column - Standard Height		
Item #	Diameter	Height
43206	3"	28"
48255	4"	28"
43207	4.5"	28"
Table Column - Bar Height		
43509	3"	40"
48256	4"	40"
43510	4.5	40"



Optional: Footrest Ring (3" Column Only)

Note: Suitable only for smaller tables for comfort.



Item #	Color
44509	Black

Part 3: Table Base

Table Base - Round	
Item #	Size
43156	18"
43157	22"
43158	30"
Table Base - Cross	
43153	22x22"
43155	30x30"
43205	33x33"
43154	24x30"
43152	2 Prong 22"



Optional: Adjustable Feet

Item #	Max Height
43626	12mm
43544	15mm



Table Setup Recommendations:

Table Setup - Regular Height (Please check column item number)				
Table Top	Column Diameter	Base Selection	Weight Rating	Diners
24" Round (ow)43166/(mb)43176	3" -43206	18" Round -43156 22"x22" Cross -43153	Light	2
30" Round (ow)43167/(mb)43177	3" -43206	22" Round -43157 30"x30" Cross -43155	Heavy	2-3
36" Round (ow)43168/(mb)43178	3" -43206 4" -48255	30" Round -43158 33"x33" Cross -43205	Heavy	4
24" Square (ow)43159/(mb)43169	3" -43206	18" Round -43156 22"x22" Cross -43153	Light	2
30" Square (ow)43162/(mb)43172	3" -43206	22" Round -43157 30"x30" Cross -43155	Heavy	2-3
36" Square (ow)43165/(mb)43175	3" -43206 4" -48255	30" Round -43158 33"x33" Cross -43205	Heavy	4
24" x 30" (ow)43160/(mb)43170	3" -43206	18" Round -43156 22"x22" Cross -43153 24" x 30" Cross -43154	Light	2
24" x 42" (ow)43161/(mb)43171	3" -43206	22" x 22" Cross -43153 24" x 30" Cross -43154	Heavy	4
30" x 42" (ow)43163/(mb)43173	(2x) 3" -43206 4" -48255 4.5" -43207	30"x30" Cross -43155 (2x) 2 Prong 22" -43152	Heavy	4
30" x 48" (ow)43164/(mb)43174	(2x) 3" -43206 4" -48255 4.5" -43207	30"x30" Cross -43155 (2x) 2 Prong 22" -43152	Heavy	4-6
30" x 60" (ow)44523/(mb)44524	(2x) 3" -43206	(2x) 2 Prong 22" -43152	Heavy	6

Notes:

Light Weight Rating:

Suitable for cafes, beverage services and bars. Good for light weight items and lighter loads.

Heavy weight Rating:

Suitable for restaurants and food service. Good for multiple dishes and moderate loads applied by customers.

Double Column:

If heavier weights than usual is expected (restaurants with heavy platters), it is recommended that two columns are installed to provide additional stability. Applicable to all rectangular surfaces.

Column Diameter:

All table columns listed are compatible with all listed bases. When in doubt, it is always safer to use a larger diameter size.

Diner Count:

Numbers listed are for comfortable spacing and weight allocation for each guest. It is possible, but not recommended to assign more guests than listed to each table.

* (ow) : Oak / Walnut
(mb) Mahogany / Black

Visual Guide:



Round Top
43166, 43167,
43168



Round Top
43176, 43177,
43178



Square Top
43159,43162,
43165



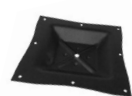
Square Top
43169,43172,
43175



Rectangle Top
43160,43161
43163,43164,
44523



Rectangle Top
43170,43171
43173,43174,
44524



Round Base
43156,43158,



Columns
43206,
48255
43207



Cross Base
43153,43155,43205,
43154



2 Prong Base
43152

Table Setup Recommendations:

Table Setup - Bar Height (Please check column item number)				
Table Top	Column Diameter	Base Selection	Weight Rating	Diners
24" Round (ow)43166/(mb)43176	3" -43509	18" Round -43156 22"x22" Cross -43153	Light	2
30" Round (ow)43167/(mb)43177	3" -43509	22" Round -43157 30"x30" Cross -43155	Light	2-3
36" Round (ow)43168/(mb)43178	3" -43509 4" -48256	30" Round -43158 33"x33" Cross -43205	Heavy	4
24" Square (ow)43159/(mb)43169	3" -43509	18" Round -43156 22"x22" Cross -43153	Light	2
30" Square (ow)43162/(mb)43172	3" -43509	22" Round -43157 30"x30" Cross -43155	Light	2-3
36" Square (ow)43165/(mb)43175	3" -43509 4" -48256	30" Round -43158 33"x33" Cross -43205	Heavy	4
24" x 30" (ow)43160/(mb)43170	3" -43509	18" Round -43156 22"x22" Cross -43153 24" x 30" Cross -43154	Light	2
24" x 42" (ow)43161/(mb)43171	3" -43509	22" x 22" Cross -43153 24" x 30" Cross -43154	Heavy	4
30" x 42" (ow)43163/(mb)43173	(2x) 3" -43509 4" -48256 4.5" -43510	30"x30" Cross -43155 (2x) 2 Prong 22" -43152	Light	4
30" x 48" (ow)43164/(mb)43174	(2x) 3" -43509 4" -48256 4.5" -43510	30"x30" Cross -43155 (2x) 2 Prong 22" -43152	Heavy	4-6
30" x 60" (ow)44523/(mb)44524	(2x) 3" -43509	(2x) 2 Prong 22" -43152	Heavy	6

Notes:

Light Weight Rating:

Suitable for cafes, beverage services and bars. Good for light weight items and lighter loads.

Heavy weight Rating:

Suitable for restaurants and food service. Good for multiple dishes and moderate loads applied by customers.

Double Column:

If heavier weights than usual is expected (restaurants with heavy platters), it is recommended that two columns are installed to provide additional stability. Applicable to all rectangular surfaces.

Column Diameter:

All table columns listed are compatible with all listed bases. When in doubt, it is always safer to use a larger diameter size.

Diner Count:

Numbers listed are for comfortable spacing and weight allocation for each guest. It is possible, but not recommended to assign more guests than listed to each table.

* (ow) : Oak / Walnut
(mb) Mahogany / Black

Visual Guide:



Round Top
43166, 43167,
43168



Round Top
43176, 43177,
43178



Square Top
43159,43162,
43165



Square Top
43169,43172,
43175



Rectangle Top
43160,43161
43163,43164,
44523



Rectangle Top
43170,43171
43173,43174,
44524



Columns
43509,
48256
43510



Round Base
43156,43157,43158



Cross Base
43153,43155,43205,
43154



2 Prong Base
43152